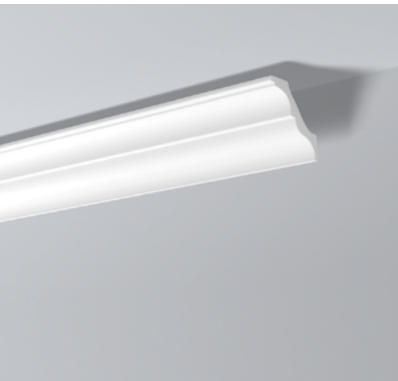


NOMASTYL® PLUS Moulding



NOMASTYL® PLUS



1. MATERIAL

Constituent material	Extruded polystyrene; fine and closed-cell, white, homogeneous foam.
Density	Approx. 60 kg/m ³
Installation temperatures	+10°C to + 30°C (ideal +15°C to +25°C)
Temperatures resistance	Max. +70°C
Surface hardness (Shore A)	Ca. 35 (average value) according to norm DIN 53505/ISO 868

2. SPECIFIC PROPERTIES

Factory Finish:
Matt white acrylic primer to be painted.

Visible surfaces:
Perfectly smooth surface with clean ends.

Gluing surfaces:
Slanted surfaces (2°) for easier fitting, and grooved for better adhesion to the glue.

Dimensions:
Length of a moulding: 2 m / 6.56 ft (tolerance ± 5 mm)
Cross section of a profile: depending on the model (Tolerance: ± 5%)



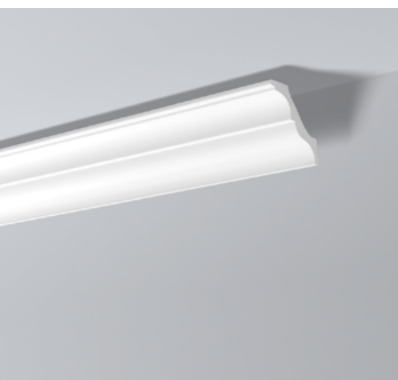
NMC sa reserves the right to update the product line or its technical features to the state-of-the-art technology anytime and without previous announcement. All given information is to the best of our knowledge. If you have any questions concerning technical details please contact the NMC sa information service. Any partial reproduction or reprint shall require our explicit approval.

NMC sa
Gert-Noël-Strasse – B-4731 Eynatten
☎ +32 87 85 85 00 – 📠 +32 87 85 85 11
info@nmc.eu



we will succeed together

NOMASTYL[®] PLUS Moulding

**NOMASTYL[®] PLUS**

3. USE

Storage and installation conditions:

Flat, sheltered from the sun and from humidity. Storage temperature: +15°C / +25°C, rel. Humidity 45% to 65%. Must be handled carefully. For the best result, the product will be fitted and stored in conditions close to those of final use. Fitting on a wet backing surface (fresh plaster) and in forced drying conditions (heat gun, dehumidifier, exceptionally high temperature) are to be ruled out. The installation instructions must be followed.

Laying surface:

The following laying surfaces are suitable: indoor plastered or papered surfaces, coated plaster.

Surfaces must be clean, dry, free from dust, degreased and flat; rough down if necessary.

If the product is to be applied to particular backing surfaces, please consult our technical department.

Tools:

NMC-PS saw and NMC-VARIO or VARIO PLUS mitre-box.

Adhesive and joints:

Glue: ADEFIX[®]

Filler and jointing material : ADEFIX[®]

Cleaning product for ADEFIX[®] (before hardening) : Water

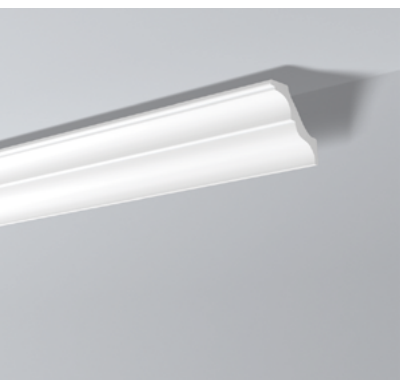
After hardening: mechanically

Finishes:

NOMASTYL[®] mouldings can be painted, without any problem, with solvent-free paints (e.g.: dispersion paints, acrylic lacquers, etc.).

If, however, you wish to apply a solvent paint, it is advisable to apply a dispersion paint first of all, and then test it.

NOMASTYL® PLUS Moulding



NOMASTYL® PLUS

4. SPECIAL INSTRUCTIONS

Regulations concerning dangerous substances:

NOMASTYL® polystyrene products are to be classified neither under "very toxic" nor under "toxic", according to the regulations concerning dangerous substances.

Important notes:

The elements are strictly decorative to the exclusion of any structural function; they are not designed to withstand loads and should be isolated by flexible joints from elements likely to convey strains or movements.

Physical properties of the products and the laying surfaces cause different natural expansion coefficients, and induce that the joint and the glue move or that (fine) hair cracks can be seen. This fact does not constitute grounds for complaint.